

## Take charge of your business with PULSE Dashboard Reporting Software

### Financial Control – sample screens

PULSE DASHBOARD is revolutionary software that lets you leverage your Macola investment a new way—with a real-time display of your vital business metrics, and detailed analysis with the click of a mouse. You will be able to track critical factors for your business, on-screen and real-time. Other modules include Executive, Customer Service / Shipping, Inventory and Purchasing.

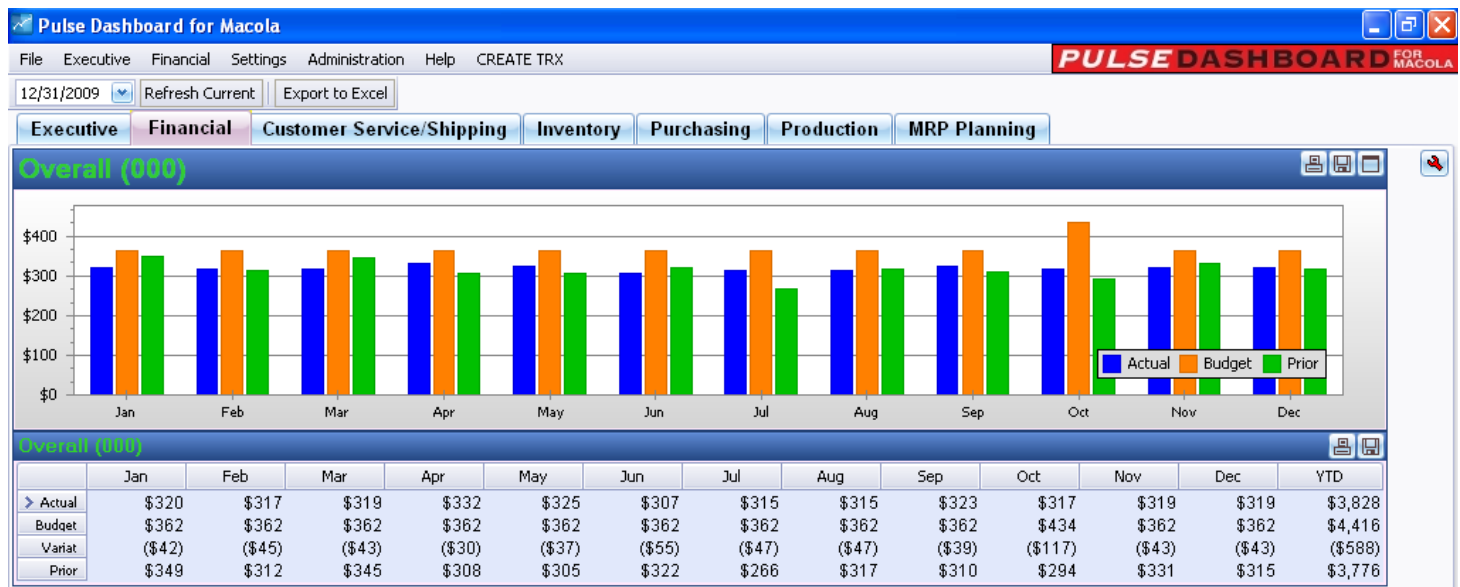
#### PULSE Dashboard adds value to your Macola investment

- Manage with real-time data, on-screen, company-wide, all the time
- Inconsistencies between reports from different departments are eliminated
- Important metrics not found in standard Macola
- One-click drill-down to view details & One-click report writer generates custom reports
- Export all reports to Excel/printer/PDF/e-mail
- Installation & training in an afternoon

#### PULSE Financial Control gives you capabilities not available elsewhere

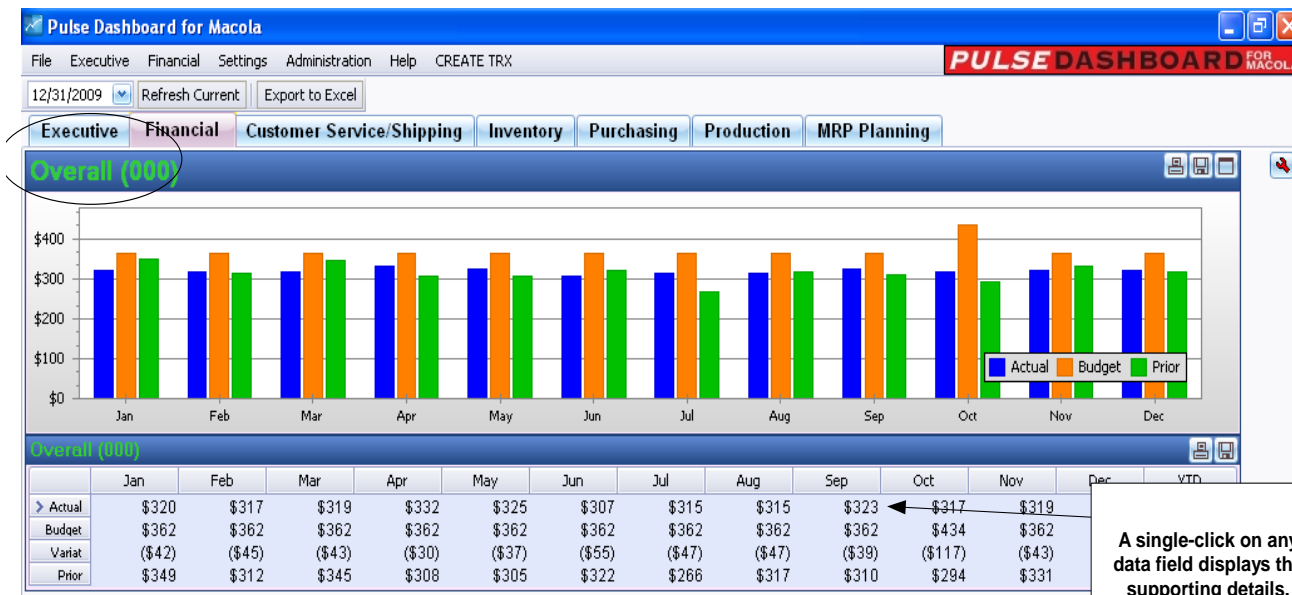
- Your Financial Control administrator can quickly and easily choose the groups of accounts to track
- Graphs show month-by-month actual vs. budget vs. last year
- Drill-down into any group of accounts or individual accounts to view more details
- The PULSE Column Chooser allows you to select just the columns you want to display
- Sort on any column and/or filter on any column
- All graphs and charts can be exported to Excel or PDF, printed or e-mailed.

The following sample screen displays your month-by-month (actual vs. budget vs. last year) performance in both a graph and chart format. You can track any expense, income or balance sheet accounts. Additionally, you may have a need to focus on certain problem areas (ex. roof repairs, travel expenses, etc.).



# The PULSE Financial Control module lets you track actual vs. budget vs. last year for the entire company

Application example: Your president wants to track important expense accounts for the entire company. Additionally, each department manager needs to track their own performance. In the example below, we set up three high-level groups of accounts to track: Miscellaneous expenses, Other expenses, and Wages. PULSE combines all accounts for the three groups in a month-by-month graph. By clicking on any number, you will be able to view a one-line total for each group (ex. overall wages). By drilling down further, you can see the detail entries for each account. See the sample screens below.



A single-click on any data field displays the supporting details. From there, you can click again to view the detail transactions.

Click to export to Excel

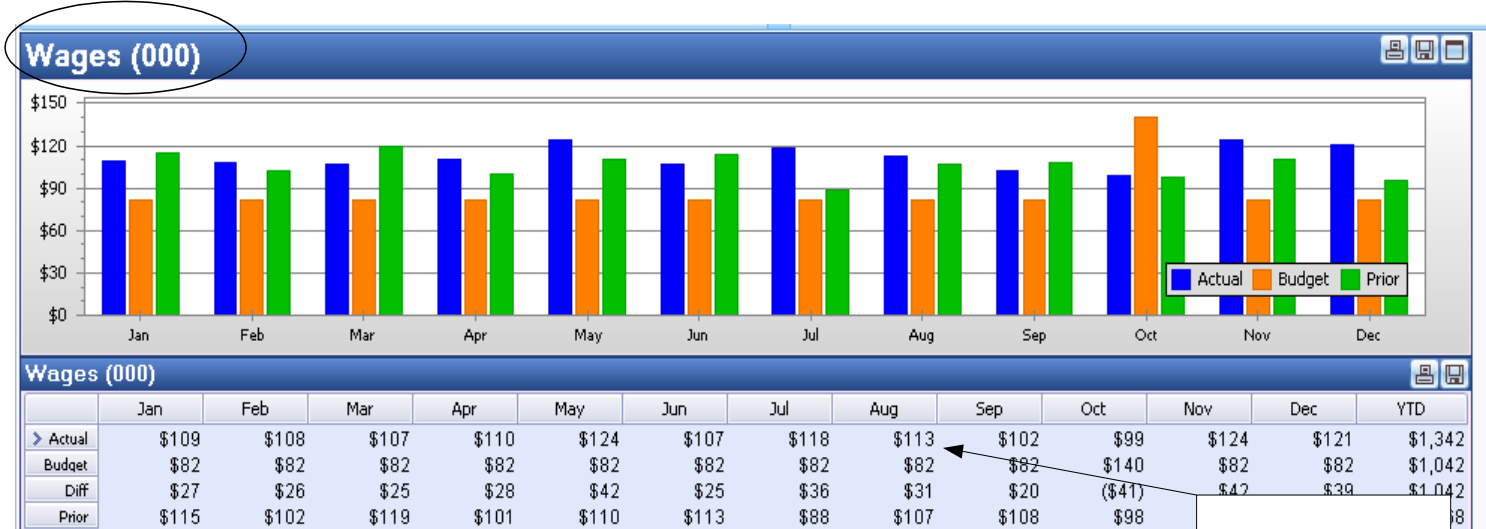
Acct Group	Jan	Feb	Mar	Apr	May	Jun	Jul	Aug	Sep	Oct	Nov	Dec	YTD \$
Misc	\$106,857.05	\$85,246.88	\$98,245.58	\$109,289.86	\$93,877.89	\$98,460.13	\$93,353.72	\$98,183.63	\$113,667.22	\$98,035.92	\$90,598.12	\$107,540.95	\$1,193,356.95
Other	\$103,455.40	\$123,848.03	\$113,116.27	\$113,153.82	\$107,136.72	\$101,584.38	\$103,704.44	\$103,993.02	\$106,926.47	\$119,502.84	\$105,046.50	\$91,042.65	\$1,292,510.54
Wages	\$109,367.31	\$107,733.21	\$107,389.09	\$109,974.79	\$123,878.43	\$106,534.42	\$118,091.08	\$112,792.44	\$102,111.25	\$99,232.76	\$123,689.39	\$120,885.40	\$1,341,679.57
	\$319,679.76	\$316,828.12	\$318,750.94	\$332,418.47	\$324,893.04	\$306,578.93	\$315,149.24	\$314,969.09	\$322,704.94	\$316,771.52	\$319,334.01	\$319,469.00	\$3,827,547.06

ID	Period	Date	Acct Desc	Amount \$
14871	2009/01	01/01/09	General Earnings Account	\$13,056.58
14799	2009/01	01/01/09	Net Pay Adjustment	\$14,421.41
14847	2009/01	01/01/09	Piece Rate Wages	\$6,844.76
14775	2009/01	01/01/09	Salaries	\$10,946.15
15015	2009/01	01/01/09	Shift	\$11,676.40
14823	2009/01	01/01/09	Wages Bonus and Commission	\$10,632.93
14967	2009/01	01/01/09	Wages Holiday	\$5,456.74
14991	2009/01	01/01/09	Wages Incentive	\$8,566.57
14895	2009/01	01/01/09	Wages Overtime	\$6,150.75
14943	2009/01	01/01/09	Wages Sick	\$12,362.58
14919	2009/01	01/01/09	Wages Vacation	\$9,252.75

# The PULSE Financial Control module lets you track actual vs. budget vs. last year for a division or department

Application example: The warehouse manager's bonus depends on meeting the budget and tracking the performance for three groups of accounts: miscellaneous expenses, other expenses, and wages. In the sample screens below, you will see how PULSE displays a graph and chart for each of the three groups of accounts. In this example, you see the individual wage accounts.



Click to export to Excel

A single-click on any data field displays the supporting details. From there, you can click again to view the detail transactions.

Acct Desc	Jan	Feb	Mar	Apr	May	Jun	Jul	Aug	Sep	Oct	Nov	YTD \$
Wages Vacation	\$9,252.75	\$10,677.03	\$9,270.88	\$8,795.80	\$9,100.26	\$5,229.51	\$6,542.29	\$6,965.77	\$12,307.05	\$10,807.43	\$12,...	\$106,819.70
Wages Bonus and Commi...	\$10,632.93	\$6,798.02	\$7,345.72	\$7,570.22	\$10,945.14	\$6,031.30	\$14,535.06	\$7,000.78	\$8,871.42	\$8,211.81	\$12,...	\$106,999.97
Piece Rate Wages	\$6,844.76	\$12,597.13	\$13,323.78	\$14,696.52	\$8,825.21	\$9,630.78	\$5,649.97	\$9,020.59	\$12,510.44	\$9,574.44	\$17,...	\$126,044.87
Salaries	\$10,946.15	\$7,164.29	\$7,525.78	\$10,636.48	\$10,647.09	\$8,035.61	\$11,284.59	\$8,889.54	\$8,499.98	\$8,056.95	\$10,...	\$113,298.33
Shift	\$11,676.40	\$12,275.25	\$11,227.00	\$13,048.40	\$14,860.41	\$12,428.46	\$8,772.09	\$11,005.39	\$9,585.09	\$13,532.68	\$5,7...	\$134,909.49
General Earnings Account	\$13,056.58	\$8,396.24	\$9,301.83	\$11,822.82	\$6,705.29	\$13,230.25	\$6,764.87	\$11,040.40	\$6,149.46	\$10,937.06	\$6,1...	\$115,089.75
Wages Overtime	\$6,150.75	\$6,157.06	\$10,284.11	\$5,270.98	\$11,531.50	\$13,829.83	\$13,819.21	\$14,979.48	\$9,857.90	\$5,499.78	\$12,...	\$121,626.01
Wages Incentive	\$8,566.57	\$10,996.12	\$14,235.72	\$9,446.92	\$14,549.10	\$10,228.67	\$10,380.27	\$10,971.87	\$8,395.23	\$7,477.30	\$13,...	\$131,058.32
Net Pay Adjustment	\$14,421.10	\$10,998.91	\$11,367.67	\$10,443.92	\$13,065.06	\$12,431.83	\$13,420.16	\$14,980.98	\$5,232.40	\$6,849.19	\$10,...	\$137,955.09
Wages Sick	\$12,362.58	\$11,956.17	\$6,262.16	\$12,397.28	\$9,411.58	\$7,429.30	\$14,934.11	\$6,999.28	\$13,496.92	\$6,861.80	\$14,...	\$130,670.89
Wages Holiday	\$5,456.74	\$9,716.99	\$7,244.44	\$5,845.45	\$14,237.79	\$8,028.88	\$11,988.46	\$10,938.36	\$7,205.36	\$11,423.92	\$10,...	\$117,207.15
	\$109,367.31	\$107,733.21	\$107,389.09	\$109,974.79	\$123,878.43	\$106,534.42	\$118,091.08	\$112,792.44	\$102,111.25	\$99,232.76	\$12,...	\$1,341,679.57

ID	Period	Date	Acct Desc	Creditor #	Debtor #	Amount \$
14895	2009/01	01/01/09	Wages Overtime			\$6,150.75
14896	2009/02	02/01/09	Wages Overtime			\$6,157.06
14897	2009/03	03/01/09	Wages Overtime			\$10,284.11
14898	2009/04	04/01/09	Wages Overtime			\$5,270.98
14899	2009/05	05/01/09	Wages Overtime			\$11,531.50
14900	2009/06	06/01/09	Wages Overtime			\$13,829.83

## PULSE Financial Control set-up is quick and easy

It is easy to set up groups of accounts for tracking. In our examples below, within the 'Other expenses' group, we want to track several accounts. If you are using the Macola ES software, you can optionally track individual projects, vendors or customers expenses. You can set up an unlimited number of groups and an unlimited number of accounts within each group:

The screenshot displays the 'Financial Control' software interface. The top section is titled 'GL Groups' and contains a table with columns for 'Include in Overall' (checkboxes) and 'Caption'. The 'Other expenses' group is selected and circled in red. Below this is the 'Account Ranges' section, which is a table with columns: 'Unproces.', 'Acct# Start', 'Acct# End', 'Cost Center Start', 'Cost Center End', 'Cost Unit Start', 'Cost Unit End', 'Project', 'Vendor #', 'Customer #', and 'Budget Scenario'. The first three rows of data are circled in red.

Unproces.	Acct# Start	Acct# End	Cost Center Start	Cost Center End	Cost Unit Start	Cost Unit End	Project	Vendor #	Customer #	Budget Scenario
>	5420	5420	[ALL]	[ALL]	[ALL]	[ALL]	[ALL]	[ALL]	[ALL]	2009
	5435	5435	[ALL]	[ALL]	[ALL]	[ALL]	[ALL]	[ALL]	[ALL]	2009
	5480	5490	[ALL]	[ALL]	[ALL]	[ALL]	[ALL]	[ALL]	[ALL]	2009

**For questions or a demonstration,**

**call Terry Lanham in Cincinnati at (513) 723-8091**

In one afternoon, we can have PULSE installed and running at your office with your data. On-going enhancements as well as unlimited set-up, training and phone support are all included as part of our annual maintenance. We encourage your phone calls with suggestions for making Pulse work better for your organization. We also offer custom modifications, but if your suggestions will be applicable to other users, they are made at no charge.

Visit [www.PulseDashboard.com](http://www.PulseDashboard.com)

©Copyright 2010 Esta Group/Leahy Consulting, Inc. 441 Vine Street – suite 4100 Cincinnati, Ohio 45202  
Founded in 1981, Leahy Consulting helps manufacturers and distributors significantly improve their accounting information systems and workflow.

The Esta Group is a consortium of authorized Macola resellers in Ohio, Michigan, Iowa and California.

Our software is 100% designed and developed in America.

1-10

