

Take charge of your business with PULSE Dashboard Reporting Software

Executive module – sample screens

PULSE DASHBOARD is revolutionary software that lets you leverage your Macola system in a new way— with real-time display of vital business metrics, and detailed analysis with the click of a mouse. You will be able to track critical factors for your business, on-screen and real-time. Other modules include Customer Service / Shipping, Inventory, Purchasing, Financial Control, Production and MRP Planning.

PULSE Dashboard adds value to your Macola investment

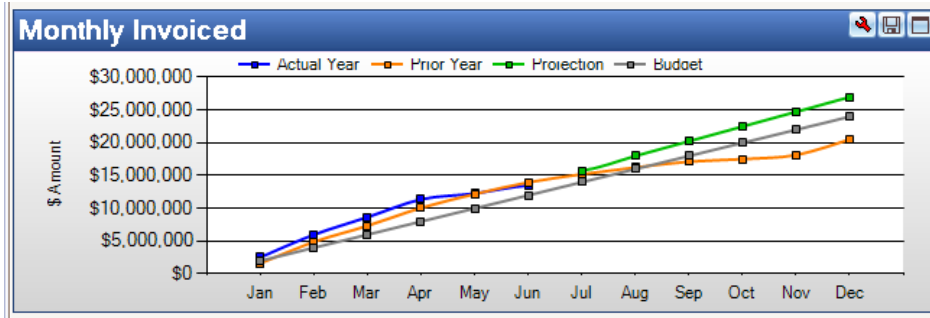
- Manage with real-time data, on-screen, company-wide, all the time
- Inconsistencies between reports from different departments are eliminated
- Important metrics not found in standard Macola
- One-click drill-down to view details & One-click report writer generates custom reports
- Export all data to Excel/printer/PDF/e-mail
- Installation & training in an afternoon



The Executive module offers:

- Customer bookings and shipments tracking for this year vs. last year vs. budget
- Sales margin tracking
- Orders to be shipped by the end of the month to maximize revenue
- Aging of A/R, A/P and purchase orders
- Key balance sheet accounts monitoring
- General ledger accounts for vendors, department, employees and expense monitoring
- Custom Tabs allow you to view the performance of key customers, customer types, items, product categories, shipping locations, sales persons, sales territories and outside agents.

PULSE tracks sales & bookings by day/month vs. last year vs. budget



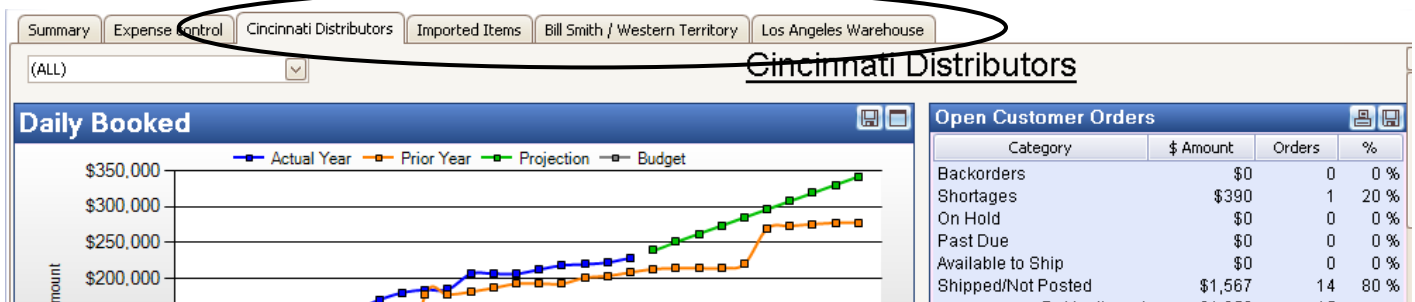
PULSE focuses your attention on orders to be shipped to maximize sales

To maximize your sales each month, it is important to know the status of each unshipped order. PULSE allows you to better focus on each category of unshipped orders. For example, someone can be assigned to research why some orders were not shipped on time.

Open Customer Orders								
	\$ Overall	\$ Avail to Ship	\$ Backorders	\$ Shortages	\$ On Hold	\$ Not Posted	Orders	%
Thru Today	\$97,193	\$37,597	\$28,566	\$13,540	\$0	\$17,490	36	5 %
Tomorrow thru M/E	\$21,082	\$2,090	\$5,274	\$13,717	\$0	\$0	53	1 %
Subtotal M/E	\$118,274	\$39,687	\$33,840	\$27,257	\$0	\$17,490	114	
Next 30 Days	\$431,421	\$98,369	\$24,371	\$211,433	\$0	\$97,248	660	21 %
Next 60 Days	\$825,517	\$314,982	\$0	\$509,440	\$0	\$1,094	985	39 %
Over 60 Days	\$729,245	\$209,443	\$0	\$519,802	\$0	\$0	28	35 %
Subtotal Future	\$1,986,183	\$622,795	\$24,371	\$1,240,675	\$0	\$98,342	1,652	
Grand Total	\$2,104,457	\$662,482	\$58,211	\$1,267,932	\$0	\$115,832	1,760	
Avg \$ / order	\$1,196							
Quotes	\$0							

PULSE offers Custom Tabs

In addition to the summary screen, you can create custom tabs to display the performance of selected customers, customer types, product categories, locations, sales persons, sales territories, etc.

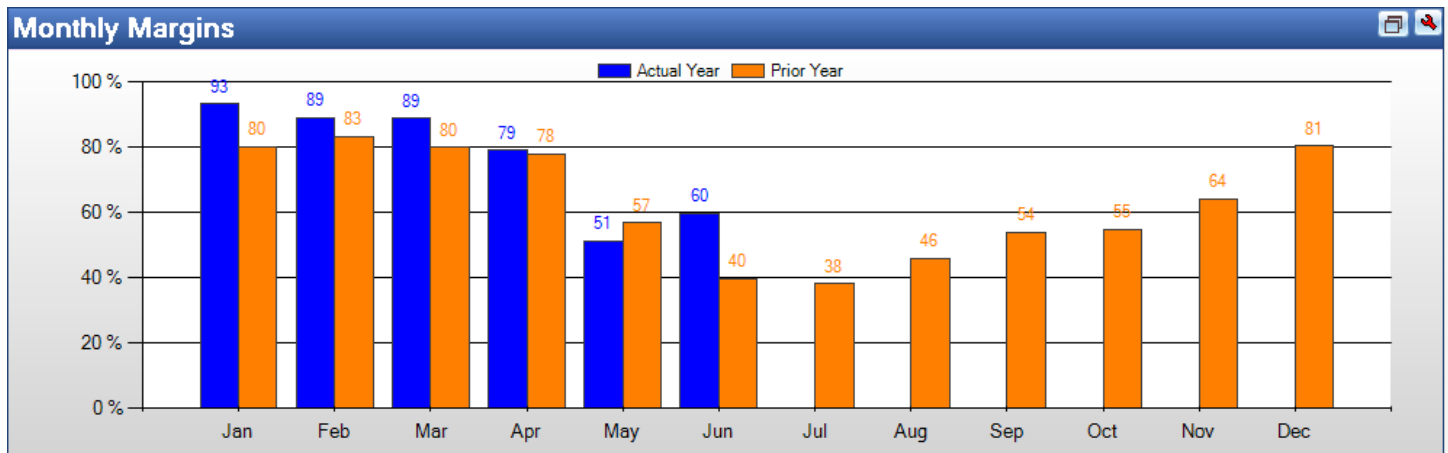


PULSE offers Expense Account monitoring

You select the accounts you want to monitor. You can drill-down into the details, choose the columns to be displayed and print/export to Excel/e-mail the results.

Expense control								
Account #	Account Description	Job #	Date	\$ Amount	PKG	Customer/Vendor #	Customer/Vendor Name	
Employee supplies \$61,480								
Roof repairs \$8,322								
Truck repairs \$8,696								
30100-	Truck repairs		1/30/2008	\$548	AP			
30100-	Truck repairs		1/31/2008	\$840	AP			
30100-	Truck repairs		1/31/2008	\$1,244	AP			
30100-	Truck repairs		2/13/2008	\$222	AP			
30100-	Truck repairs		2/29/2008	\$420	AP			
30100-	Truck repairs		3/31/2008	\$373	AP			
30100-	Truck repairs		3/31/2008	\$194	AP			
30100-	Truck repairs		4/18/2008	\$289	AP			
30100-	Truck repairs		4/30/2008	(\$9)	AP			
30100-	Truck repairs		4/30/2008	\$441	AP			

PULSE allows you to enlarge any graph for better viewing



PULSE allows you to monitor orders booked & shipped real-time during the day

Orders - June, 2008				
Booked		Invoiced		Day
\$ Amount	Orders	\$ Amount	Orders	
				1
\$38,176	53	\$84,425	35	2
\$22,561	25	\$11,235	12	3
\$79,804	35	\$19,498	24	4
\$8,617	13	\$135,216	34	5
\$120,573	22	\$57,804	36	6
				7
				8
\$34,680	46	\$97,172	27	9
\$35,136	28	\$211,405	37	10
\$23,405	31	\$58,585	25	11
\$80,100	14	\$64,355	35	12
\$38,538	23	\$58,355	27	13
				14
				15
\$34,063	48	\$85,358	29	16
\$10,154	16	\$102,113	16	17
\$6,423	10	\$24,017	34	18
\$55,217	23	\$48,792	21	19
\$45,768	32	\$158,940	19	20
\$633,213	419	\$1,217,269	411	Subtotals

PULSE Dashboard offers One-click drill-down and custom report writer

Pulse offers 'One-click drill-down' on any screen or graph to view supporting details. The 'One-click custom report writer' allows each user to quickly add or remove columns, change sorting and export the results to Excel/printer/PDF/e-mail in seconds. Anyone in your company can now generate custom views.

Open Customer Orders

Category	\$ Amount	Orders	%
Backorders	\$64,910	83	28 %
Shortages	\$0	0	0 %
On Hold	\$0	0	0 %
Past Due	\$33,948	7	15 %
Available to Ship	\$1,926	3	1 %
Shipped/Not Posted	\$130,099	27	56 %
By Month-end	\$230,884	0	
Backorders	\$1,283,407	179	69 %
Shortages	\$0	389	0 %
On Hold	\$0	5	0 %

Customer Orders to Ship (Past Due)

Click to export to Excel

Future Grand Total

Avg \$ / order

Customer Orders to Ship (Past Due)

Drag a column header here to group by that column

Customer #	Customer Name	Orders	Backordered \$	Cost \$	Total \$
00000001000	CINCINNATI DISTRIBUTORS	4	\$0	\$2,577	\$32,828
00000003100	DES MOINES DISTRIBUTORS	3	\$0	\$524	\$1,120

CINCINNATI DISTRIBUTORS

Order #	Request Date	Required Ship Date	Backordered \$	Total \$
00215465	06/15/08	06/15/08	\$0	\$13,885
00215465	06/15/08	06/15/08	\$0	\$7,958
00214294	06/15/08	06/15/08	\$0	\$195
00215465	06/15/08	06/15/08	\$0	\$114
0022362	06/17/08	06/17/08	\$0	\$377
00226713	06/19/08	06/19/08	\$0	\$5,642
00226713	06/19/08	06/19/08	\$0	\$3,237
00226713	06/19/08	06/19/08	\$0	\$1,222
00226713	06/19/08	06/19/08	\$0	\$811
00226713	06/19/08	06/19/08	\$0	\$647
00226713	06/19/08	06/19/08	\$0	\$625
00226713	06/19/08	06/19/08	\$0	\$116

A single-click on any data field OR point on any graph displays a report of supporting details. From there, you can single-click again to view more details.

Column selection and sorting can be customized by the user in seconds.

For questions or a demonstration,

call Terry Lanham in Cincinnati at (513) 723-8091

In one afternoon, we can have PULSE installed and running at your office. On-going enhancements as well as unlimited set-up, training and phone support are included as part of our annual maintenance. We encourage your unlimited phone calls with suggestions for making Pulse work better for your organization. We also offer custom modifications, but if your suggestions will be applicable to other users, they are made at no charge.

Visit www.PulseDashboard.com

©Copyright 2010 Esta Group/Leahy Consulting, Inc. 441 Vine Street – suite 4100 Cincinnati, Ohio 45202
 Founded in 1981, Leahy Consulting helps manufacturers and distributors significantly improve their accounting information systems and workflow.
 The Esta Group is a consortium of authorized Macola resellers in Ohio, Michigan, Iowa and California.

Our software is 100% designed and developed in America.

1-10

