

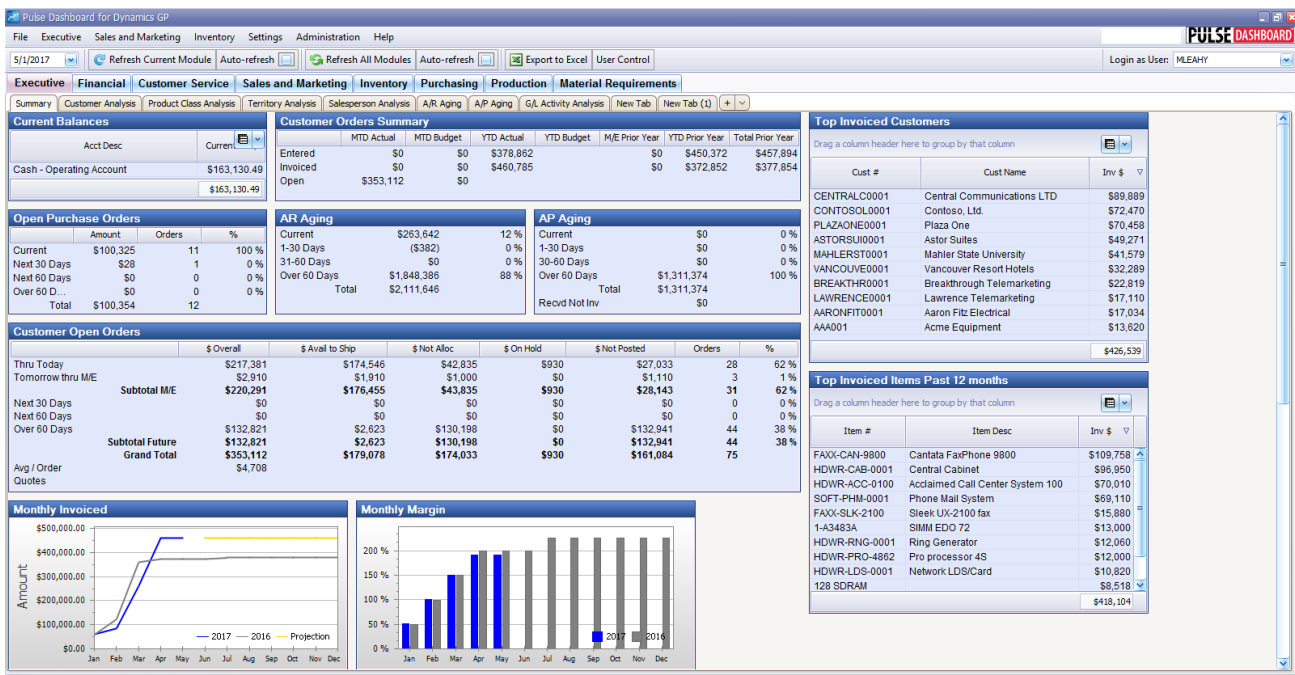
## Executive module – sample screens

### Take charge of your business with PULSE Dashboard & Analytics Software for GP

PULSE DASHBOARD is revolutionary software that lets you leverage your GP system in a new way - with real-time display of vital business metrics and detailed analysis with the click of a mouse. You will track critical factors for your business on your screen in real-time. Other modules include Customer Service/Shipping, Inventory Control, Purchasing, Financial Control, Production Control, and Material Requirements Planning.

#### PULSE Dashboard adds value to your Microsoft Dynamics GP investment

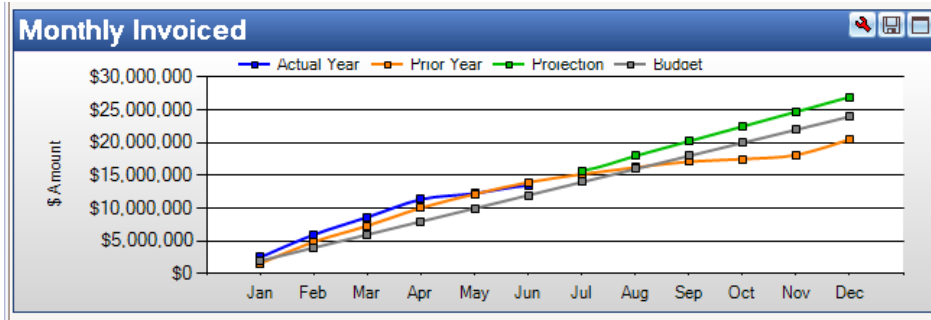
- Manage with real-time data, on-screen, company-wide, all the time
- Inconsistencies between reports from different departments are eliminated
- One-click drill-down to view details & One-click report writer generates custom reports
- All screen data exports to Excel/printer/PDF/e-mail
- No tedious set-up - installation & training in an afternoon



#### The Executive module offers:

- Track customer orders received and shipped for this year vs. last year vs. budget
- Sales margin tracking and analysis
- Orders to be shipped by the end of the month to maximize revenue
- Aging of A/R, A/P, and purchase orders
- Critical balance sheet accounts monitoring
- General ledger expense monitoring
- Custom Tabs allow you to view the performance of key customers, customer types, items, product classifications, shipping locations, salespersons, sales territories, etc.

## PULSE Executive tracks sales & bookings by day/month vs. last year vs. budget



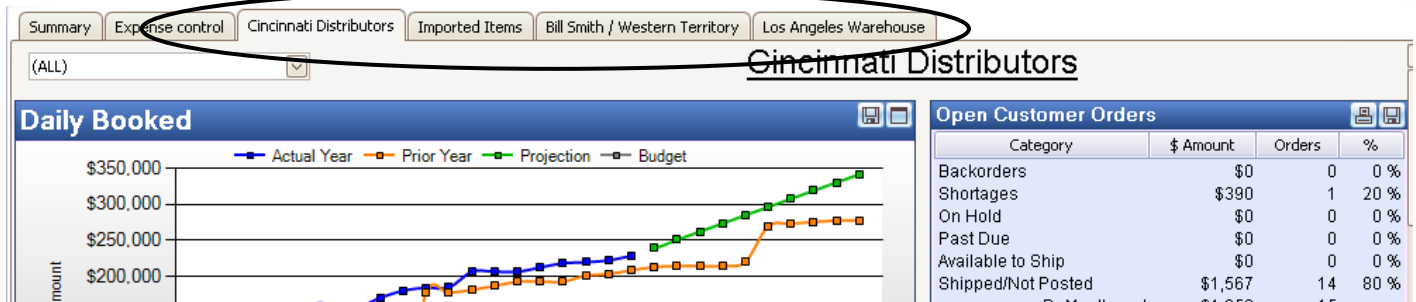
## PULSE Executive focuses your attention on on-time shipping

To maximize your monthly sales, it is essential to know the status of each unshipped customer order. PULSE allows you to concentrate on unshipped orders. Staff can be assigned to research why some orders were not shipped on time.

Open Customer Orders								
	\$ Overall	\$ Avail to Ship	\$ Backorders	\$ Shortages	\$ On Hold	\$ Not Posted	Orders	%
Thru Today	\$97,193	\$37,597	\$28,566	\$13,540	\$0	\$17,490	36	5 %
Tomorrow thru M/E	\$21,082	\$2,090	\$5,274	\$13,717	\$0	\$0	53	1 %
<b>Subtotal M/E</b>	<b>\$118,274</b>	<b>\$39,687</b>	<b>\$33,840</b>	<b>\$27,257</b>	<b>\$0</b>	<b>\$17,490</b>	<b>114</b>	
Next 30 Days	\$431,421	\$98,369	\$24,371	\$211,433	\$0	\$97,248	660	21 %
Next 60 Days	\$825,517	\$314,982	\$0	\$509,440	\$0	\$1,094	985	39 %
Over 60 Days	\$729,245	\$209,443	\$0	\$519,802	\$0	\$0	28	35 %
<b>Subtotal Future</b>	<b>\$1,986,183</b>	<b>\$622,795</b>	<b>\$24,371</b>	<b>\$1,240,675</b>	<b>\$0</b>	<b>\$98,342</b>	<b>1,652</b>	
<b>Grand Total</b>	<b>\$2,104,457</b>	<b>\$662,482</b>	<b>\$58,211</b>	<b>\$1,267,932</b>	<b>\$0</b>	<b>\$115,832</b>	<b>1,760</b>	
Avg \$ / order	\$1,196							
Quotes	\$0							

## PULSE Executive offers custom tabs

In addition to the company-wide summary screens, you can create custom tabs to display the performance of selected customers, customer types, product classifications, locations, salespersons, sales territories, etc.

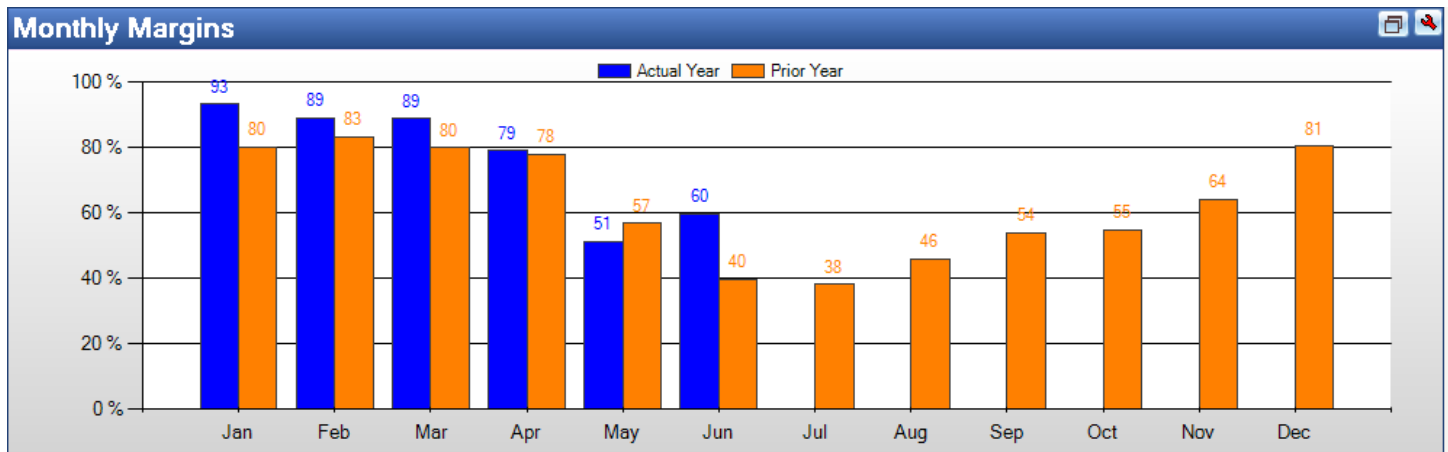


## PULSE Executive offers expense analysis

You select the general ledger accounts you want to analyze. You can drill down into the details, choose the columns to be displayed, and print/export to Excel/e-mail the results.

Expense control							
Account #	Account Description	Job #	Date	\$ Amount	PKG	Customer/Vendor #	Customer/Vendor Name
Employee supplies \$61,480							
Roof repairs \$8,322							
Truck repairs \$8,696							
30100-	Truck repairs		1/30/2008	\$548	AP		
30100-	Truck repairs		1/31/2008	\$840	AP		
30100-	Truck repairs		1/31/2008	\$1,244	AP		
30100-	Truck repairs		2/13/2008	\$222	AP		
30100-	Truck repairs		2/29/2008	\$420	AP		
30100-	Truck repairs		3/31/2008	\$373	AP		
30100-	Truck repairs		3/31/2008	\$194	AP		
30100-	Truck repairs		4/18/2008	\$289	AP		
30100-	Truck repairs		4/30/2008	(\$9)	AP		
30100-	Truck repairs		4/30/2008	\$441	AP		

## PULSE Executive allows you to enlarge any graph for better viewing



## PULSE Executive provides real-time monitoring of orders received & shipped

Orders - June, 2008				
Booked		Invoiced		Day
\$ Amount	Orders	\$ Amount	Orders	
				1
\$38,176	53	\$84,425	35	2
\$22,561	25	\$11,235	12	3
\$79,804	35	\$19,498	24	4
\$8,617	13	\$135,216	34	5
\$120,573	22	\$57,804	36	6
				7
				8
\$34,680	46	\$97,172	27	9
\$35,136	28	\$211,405	37	10
\$23,405	31	\$58,585	25	11
\$80,100	14	\$64,355	35	12
\$38,538	23	\$58,355	27	13
				14
				15
\$34,063	48	\$85,358	29	16
\$10,154	16	\$102,113	16	17
\$6,423	10	\$24,017	34	18
\$55,217	23	\$48,792	21	19
\$45,768	32	\$158,940	19	20
\$633,213	419	\$1,217,269	411	Subtotals

## PULSE Dashboard offers One-click drill-down and custom report writer

PULSE offers "One-click drill-down" on any screen or graph to view supporting details. The "One-click custom report writer" allows each user to quickly add or remove columns, change sorting and export the results to Excel/printer/PDF/e-mail in seconds. No database technical knowledge is needed.

**Open Customer Orders**

Category	\$ Amount	Orders	%
Backorders	\$64,910	83	28 %
Shortages	\$0	0	0 %
On Hold	\$0	0	0 %
Past Due	\$33,948	7	15 %
Available to Ship	\$1,926	3	1 %
Shipped/Not Posted	\$130,099	27	56 %
By Month-end	\$230,884	0	
Backorders	\$1,283,407	179	69 %
Shortages	\$0	389	0 %
On Hold	\$0	5	0 %

**Customer Orders to Ship (Past Due)**

Click to export to Excel

Future Grand Total

Avg \$ / order

Customer Orders to Ship (Past Due)

Customer #	Customer Name	Orders	Backordered \$	Cost \$	Total \$
00000001000	CINCINNATI DISTRIBUTORS	4	\$0	\$2,577	\$32,828
000000003100	DES MOINES DISTRIBUTORS	3	\$0	\$524	\$1,120

CINCINNATI DISTRIBUTORS

Order #	Request Date	Required Ship Date	Backordered \$	Total \$
00215465	06/15/08	06/15/08	\$0	\$13,885
00215465	06/15/08	06/15/08	\$0	\$7,958
00214294	06/15/08	06/15/08	\$0	\$195
00215465	06/15/08	06/15/08	\$0	\$114
00223362	06/17/08	06/17/08	\$0	\$377
00226713	06/19/08	06/19/08	\$0	\$3,642
00226713	06/19/08	06/19/08	\$0	\$3,237
00226713	06/19/08	06/19/08	\$0	\$1,222
00226713	06/19/08	06/19/08	\$0	\$811
00226713	06/19/08	06/19/08	\$0	\$647
00226713	06/19/08	06/19/08	\$0	\$625
00226713	06/19/08	06/19/08	\$0	\$116

A single-click on any data field OR point on any graph displays a report of supporting details. From there, you can single-click again to view more details.

Column selection and sorting can be customized by the user in seconds.

**For more information or a demonstration, call (513) 723-8091**

We can have PULSE installed and running with your data in one afternoon. On-going enhancements and unlimited training and phone support are included in our annual maintenance.

Leahy Consulting is an independent ERP consulting company with over 30 years of experience supporting and optimizing ERP systems.

Visit [www.PulseGP.com](http://www.PulseGP.com)

Copyright © 2022 by Leahy Consulting, Inc. Cincinnati, Ohio USA

2/22